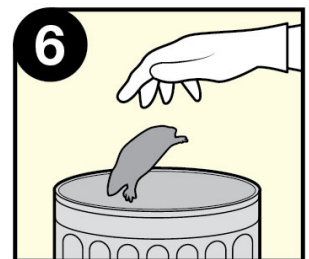
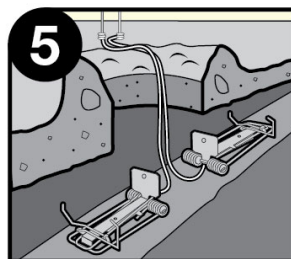
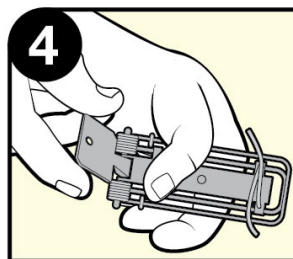
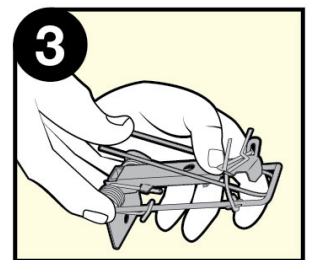
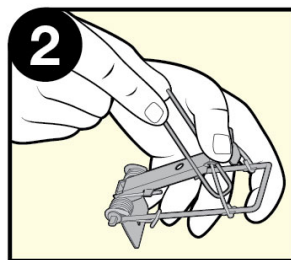
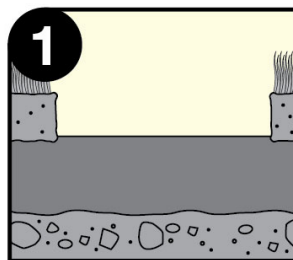
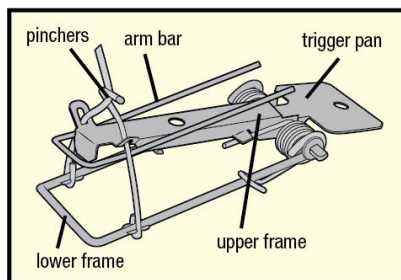


## Victor® Easy Set Gopher Trap Instructions

1. Remove and expose the active mound or tunnel. It is recommended the lawn be "peeled" back to preserve for use after gopher has been caught. Remove just enough dirt to fit the traps (recommended to place two traps positioned back-to-back).
2. Hold the trap in one hand, and with the fingers of your other hand, lift up on the arm bar to an almost vertical position.
3. With thumb positioned behind the pinchers, press down on the upper frame until closed end of the arm bar is engaged under the lower frame.
4. With other hand, press down on open end of arm bar to hold trap set, and engage trigger pan over ends of arm bar.
5. Place traps in the tunnel or mound opening. Traps must be level with the bottom of the mound or tunnel. Secure traps with wire or cord to a stake positioned outside of the entrance to prevent gophers from dragging traps away. Seal all cracks with loose soil to ensure light does not filter through.
6. After the trap has fired, remove the gopher if desired.



**Caution: When setting or handling set gopher traps, keep fingers away from jaws. Keep gopher traps away from children and anyone unfamiliar with their use.**