

MANUFACTURERS OF:

Snake Repellent

Snake Glue Trap

Bat Repellent

Mole Control

Spider Web Control

Rabbit & Squirrel

Rat Repelling Granules

Dog & Cat Repellent

Deer & Rabbit

Mosquito Granules

Indoor Varmint Repellent

Flea & Tick Repellent

Insect Repellent

Guaranteed Performance

Dr. T's Nature Products, Inc.

Pelham, GA.

800-299-6288 REPELL.com

UNIVERSITY TESTED

LASTS 2 TO 3 MONTHS

Dr. T's Nature Products THE REPELLENT CO.

Snake-A-Way Snake Repelling Granules

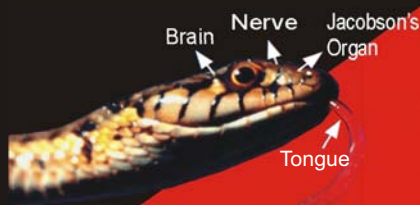
REPELS POISONOUS & NONPOISONOUS SNAKES

Guaranteed!



Active Ingredients: Naphthalene: 7.0%, Sulfur: 28.0%, Inert Ingredients: 65.0%, Total: 100.0%, Net Weight 1.75 lbs. (0.794 kg)

CAUTION: Keep Out of Reach of Children (See back panel for additional precautionary statements.) Patented EPA Reg. Number 58630-1 EPA Est. No. 58630-GA-1



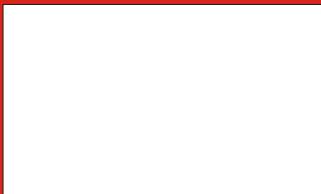
HOW SNAKE-A-WAY WORKS THE STUDY BY THE UNIVERSITY THAT TESTED

SNAKE-A-WAY STATES THAT SNAKE-A-WAY IS DETECTED BY THE SNAKE'S SENSORY ORGAN (JACOBSON'S ORGAN). WHEN THE PRODUCT IS DETECTED BY THE JACOBSON'S ORGAN IT

APPLY SNAKE-A-WAY AROUND HOUSES, CABINS, TRAILERS, GARAGES, BARNs, WOODPILES, TRASH CANS, FLOWER BEDS OR ANYWHERE SNAKES ARE UNDESIREd.

WHEN TO APPLY SNAKE-A-WAY:

- SPRING: WHEN SNAKES ARE MOST ACTIVE
SUMMER: WHEN FAMILIES ARE MOST EXPOSED TO THE OUTDOORS
FALL: APPLICATION IS CRITICAL IN PREVENTING SPRING INFESTATIONS ARRIVING FROM HIBERNATION AND DENNING.



PRECAUTIONARY STATEMENTS: HAZARDS TO HUMANS AND DOMESTIC ANIMALS

CAUTION

Harmful if swallowed, avoid breathing vapors. Avoid contamination of food and feed.

Avoid prolonged skin contact.

ENVIRONMENTAL HAZARDS

This pesticide is toxic to fish. Do not apply directly to water, or to areas where surface water is present or to intertidal areas below the mean water mark.

DIRECTIONS FOR USE

It is a violation of federal law to use this product in a manner inconsistent with its labeling. USE RESTRICTIONS: FOR OUTDOOR USE ONLY. APPLY ONLY AS DIRECTED ON LABEL. To repel rattlesnakes (Genus Crotalus) and checkered garter (Thamnophis Marcianus) from areas around houses, cabins, trailers, garages, utility houses, barns, woodpiles, sand piles, trash cans, and flower beds. May also be used around the periphery of gardens. Do not use this product at sites where snakes are believed to be already present as the deterrent effects of the product might tend to confine snakes to the treated areas. Do not apply this product in gardens or in fields of crops grown for food or feed. Do not use this product near streams, ponds, pools, or water supplies. Tests of this product have suggested that it can be an effective deterrent for the types of snakes listed above. While the product might deter other types of snakes as well, it is not expected to consistently repel snakes of the following types: corn snakes and other rat snakes (Genus Elaphe); and "moccasin" snakes such as cottonmouths and copperheads (Genus Agkistrodon).

APPLICATION DIRECTIONS: Using gloves, apply SNAKE-A-WAY IN BANDS SURROUNDING THE AREA TO BE PROTECTED. Use bands 4 to 5 inches wide to repel checkered garter snakes. For rattlesnakes, use bands 8 to 12 inches wide. In yards, lightly sprinkle SNAKE-A-WAY over the area within the treatment band. When the odor of SNAKE-A-WAY becomes faint, its effectiveness may be diminished. If this occurs during a season when snakes are active, retreat with enough of the product to restore the original odor intensity. Retreatment may also be necessary after heavy rains. Storage and Disposal STORAGE: Store only in original container, in a cool, dry place, inaccessible to children and pets. DISPOSAL: If empty: Do not reuse this container. Place in trash or offer for recycling if available. If partly filled: Call your local solid waste agency or 1-800-CLEANUP (1-800-253-2687) for disposal instructions. Never place unused product down any indoor or outdoor drain.

FIRST AID

Have label with you when obtaining treatment advice.

Table with 2 columns: Condition (If swallowed, If on skin or clothing, If inhaled, If in eyes) and Action steps.

NOTE TO PHYSICIAN:

If breathing is difficult, give oxygen.

Notice: Buyer assumes all risk of use, storage, and handling of this material not in strict accordance with label directions.